

Linear guide

LFS-16-300

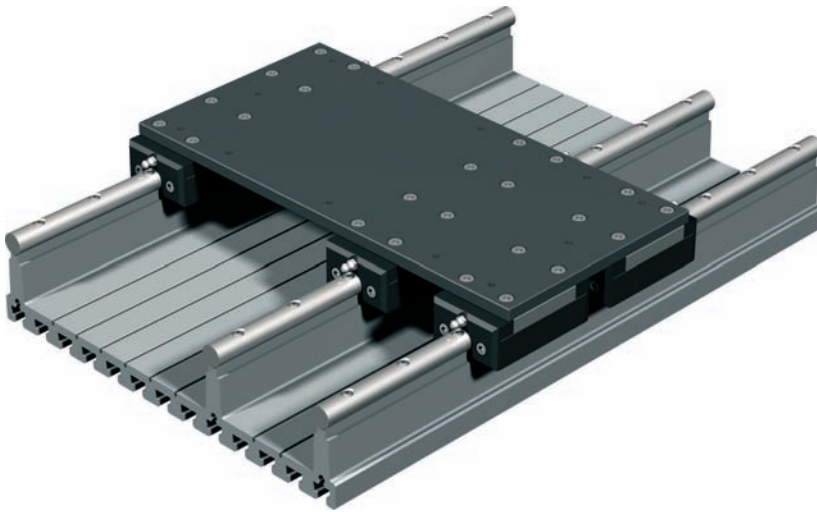
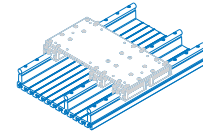


Figure:
Linear guide rail and 4 linear guide slides with slide panel

Linear guide rail LS-16-300



- 2 precision steel shafts Ø 16 mm
- Aluminium profile track with T-groove indents, 25 mm grid, anodized
- Precise shaft intake contour milled in a clamp mount
- Conditionally cantilevered
- Standard length 3 m, segmentable as needed
- Weight: 20.3 kg/m

Item no.: **220028 0099** (Length 1 m)
220028 0199 (Length 2 m)
220028 0299 (Length 3 m)

Option:

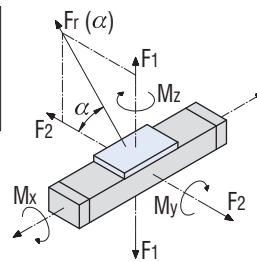
- Other lengths (longer or shorter)

Load data

Linear guide LFS-16-300 3 steel slides		Linear guide LFS-16-300 6 steel slides	
C ₀	8864 N	C ₀	11396 N
C	5667 N	C	7286 N
F ₁ stat.	7569 N	F ₁ stat.	9731 N
F ₁ dyn.	4839 N	F ₁ dyn.	6221 N
F ₂ stat.	8864 N	F ₂ stat.	11396 N
F ₂ dyn.	5667 N	F ₂ dyn.	7286 N
M _x stat.	1135.3 Nm	M _x stat.	1459.7 Nm
M _y stat.	227.1 Nm	M _y stat.	535.2 Nm
M _z stat.	265.9 Nm	M _z stat.	626.8 Nm
M _x dyn.	725.8 Nm	M _x dyn.	933.2 Nm
M _y dyn.	145.2 Nm	M _y dyn.	342.2 Nm
M _z dyn.	170.0 Nm	M _z dyn.	400.7 Nm

$$F_r(\alpha) = \frac{F_2}{\cos \alpha}$$

$$F_r(\alpha) = \frac{F_1}{\sin \alpha}$$



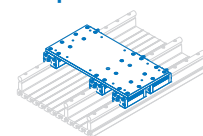
Linear guide slide FS-16-S0



- Steel slide
L 94 x W 58 x 33.7 mm
- 4 ball races, adjustable backlash-free
- Lubricating nipple on the face
- Weight: 0.72 kg

Item no.: **223210**

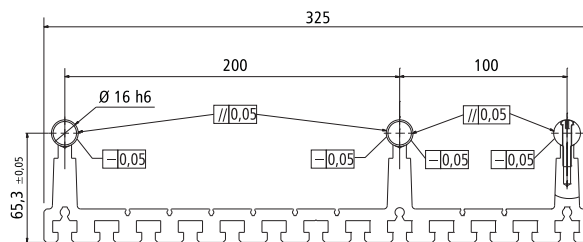
Linear guide slide FS-16-S0 with slide panel



- 3 or 6 linear guide slides
- Slide panel (steel ground)
- Adjustable backlash-free
- Weight: 4.5 kg (3x) or 9.1 kg (6x) respectively

Item no.: **223240 0042** (3 slides)
223240 0043 (6 slides)

Scale drawing



The two prismatic shaft intake contours are simultaneously produced clamped on a dual side milling cutter. This process ensures a high parallelism between the two precision steel shafts to each other. Both steel shafts are bolted down onto the milled profile in a grid of 100 mm.

Technical specifications subject to change.