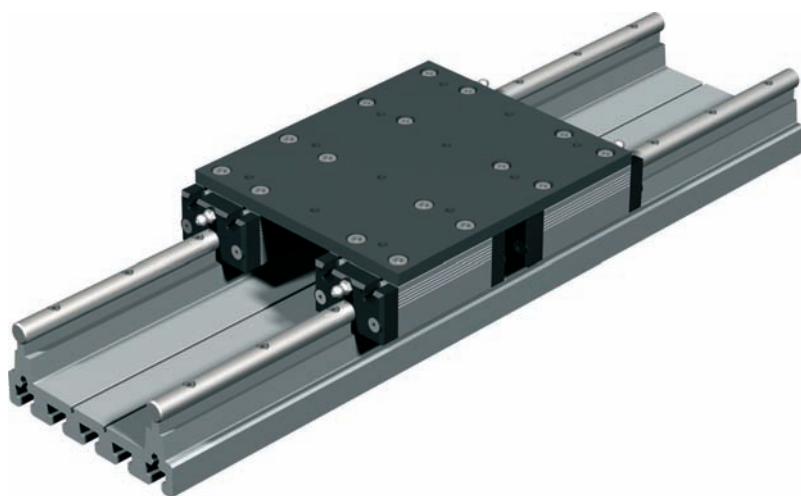


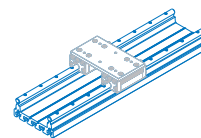
# Linear guide

# LFS-12-100



**Figure:**  
Linear guide rail and 4 linear guide slides with slide panel

## Linear guide rail LS-12-100



- 2 precision steel shafts Ø 12mm  
Mounting grid 100 mm
- Aluminium profile track with T-groove indents, 25 mm grid, anodized
- Precise shaft intake contour milled in a clamp mount
- Conditionally cantilevered
- Standard length 3 m, segmentable as needed
- Weight: 7.5 kg/m

Item no.: **220034 0099** (Length 1 m)  
**220034 0199** (Length 2 m)  
**220034 0299** (Length 3 m)

Option:

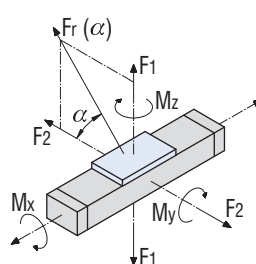
- Other lengths (longer or shorter)

## Load data

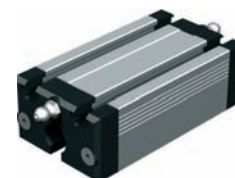
Linear guide LFS-12-100 2 aluminium slides		Linear guide LFS-12-100 4 aluminium slides	
C <sub>0</sub>	4955 N	C <sub>0</sub>	6606 N
C	2810 N	C	3746 N
F <sub>1</sub> stat.	4232 N	F <sub>1</sub> stat.	5642 N
F <sub>1</sub> dyn.	2399 N	F <sub>1</sub> dyn.	3198 N
F <sub>2</sub> stat.	4955 N	F <sub>2</sub> stat.	6606 N
F <sub>2</sub> dyn.	2810 N	F <sub>2</sub> dyn.	3746 N
M <sub>x</sub> stat.	215.8 Nm	M <sub>x</sub> stat.	287.7 Nm
M <sub>y</sub> stat.	148.1 Nm	M <sub>y</sub> stat.	310.3 Nm
M <sub>z</sub> stat.	173.4 Nm	M <sub>z</sub> stat.	363.3 Nm
M <sub>x</sub> dyn.	122.3 Nm	M <sub>x</sub> dyn.	163.1 Nm
M <sub>y</sub> dyn.	84.9 Nm	M <sub>y</sub> dyn.	175.9 Nm
M <sub>z</sub> dyn.	98.3 Nm	M <sub>z</sub> dyn.	206.0 Nm

$$F_r(\alpha) = \frac{F_2}{\cos \alpha}$$

$$F_r(\alpha) = \frac{F_1}{\sin \alpha}$$



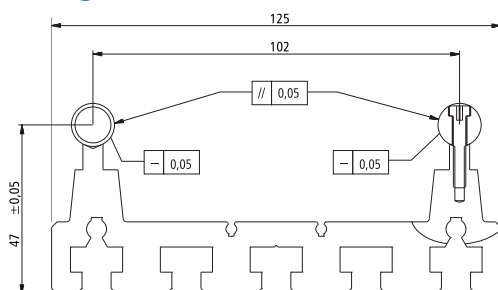
## Linear guide slide FS-12-0



- Aluminium slide with 8 steel inserts  
L 100 x W 50 x H 32 mm
- 4 ball races, adjustable backlash-free
- Lubricating nipple on the face
- Weight: 0.30 kg

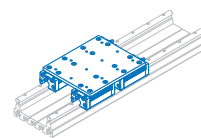
Item no.: **223106 0070**

## Scale drawing



The two prismatic shaft intake contours are simultaneously produced clamped on a dual side milling cutter. This process ensures a high parallelism between the two precision steel shafts to each other. Both steel shafts are bolted down onto the milled profile in a grid of 100 mm.

## Linear guide slide FS-12-0 with slide panel



- 2 or 4 linear guide slides
- Slide panel (steel ground)
- adjustable backlash-free
- Weight: 1.48 kg or 3.47 kg respectively

Item no.: **223240 0028** (2 slides)  
**223240 0029** (4 slides)

Technical specifications subject to change.