

## Linear unit with direct drive

## iLD-16-200

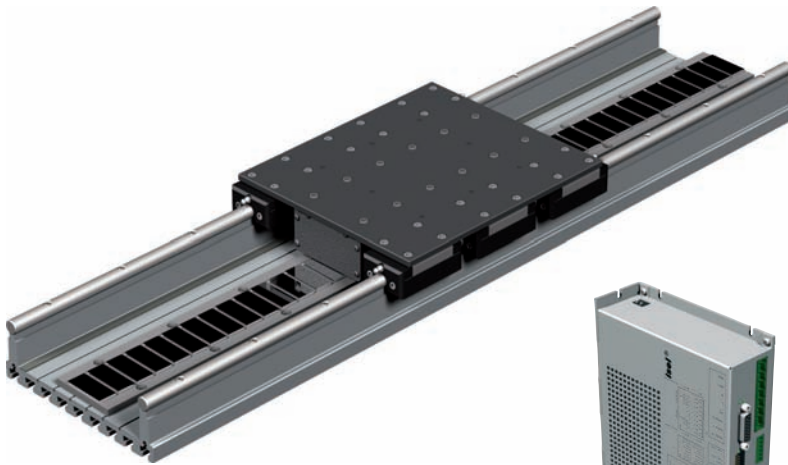


Figure:  
Linear unit iLD-16-200



Figure:  
Driver controller iMD 40

### Characteristics

- Aluminium linear guide W 225 x H 63.5 mm with magnetic track MS 50
- Internal magnetic tape
- Drive slide with spool pack LS 50 (6 coils) and path measuring head 10 μm
- 6 steel shaft slides FS-16-SO
- Quiet operation, adjustable backlash-free
- Great dynamic and speeds to max. 2 m/s
- No signal dead range, elimination of mechanical transmission elements
- No maintenance or lubrication required
- With 2 limit or reference switches
- Repeat accuracy ± 0.01 mm
- Standard lengths to 3m (segment as needed)

### General

The iLD 16 series linear units with direct drives are modular. The base is comprised of the rigid aluminium profiles with 16-style precision steel shafts as well as magnetic tracks mounted in-between with a path tape rule and limit switches.

They are particularly suited for applications requiring speed and precision. The max. path feed rate is 2 m/s. The feed motion is performed with a minimum of 2 drive slides with integrated spool pack and path measuring head.

The linear units can be used vertically as well as horizontally, with or without brake. Dynamics and speed are determined by the number of spools inside the spool pack. Special attention was paid to an ideal price/performance ratio in the construction and the design. The iLD 16 linear units with direct drive have no mechanical transmission elements, no signal dead range, and require no maintenance or lubrication. Add to this a compact construction with high performance, accuracy and durability.

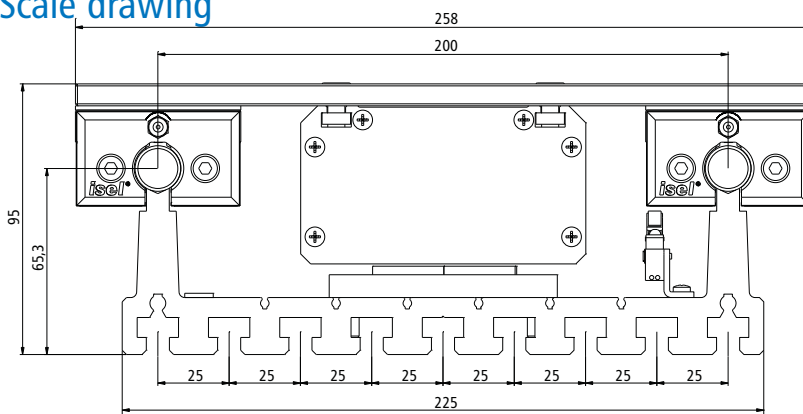
### Technical specifications

Moment of inertia $I_x$	70.77 cm <sup>4</sup>
Moment of inertia $I_y$	2200.01 cm <sup>4</sup>
Cross-sectional area	39.58 cm <sup>2</sup>
Material	AlMgSiO, 5F22
Anodisation	E6/EV1
Weight with steel shafts	13.8 kg/m

#### Options:

- Drive control
- Bellows cover
- Profile cover
- String potentiometer 5 μm
- Circular connector
- Locking brake
- Spool packs with 3 / 9 or 12 spools

### Scale drawing



Technical specifications subject to change.

### Order data

- Item no.: **237520 1099** (Length 1 m)  
 Item no.: **237520 1199** (Length 2 m)  
 Item no.: **237520 1299** (Length 3 m)